

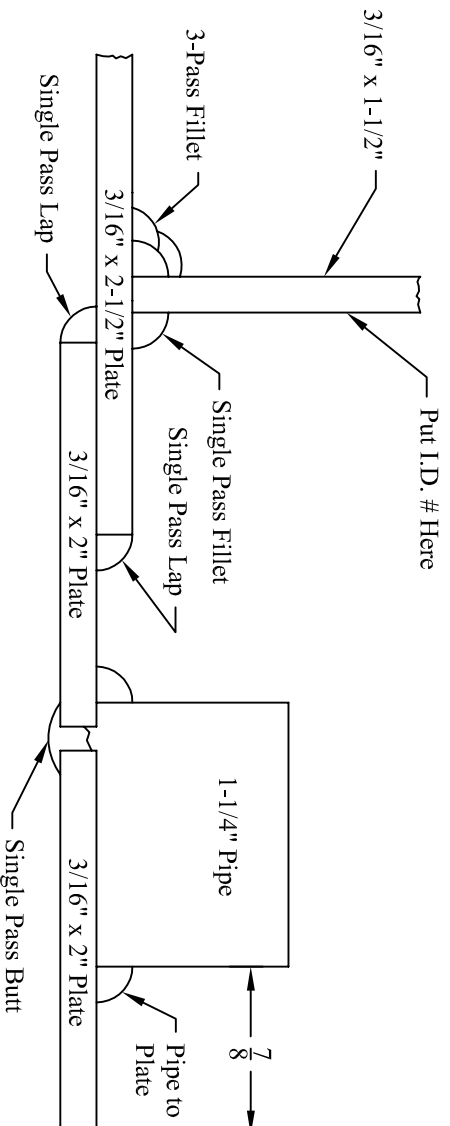
HILMAR HIGH SCHOOL

Arc Welding Assignment

NAME: _____

DATE: _____

I.D.#: _____



Materials:

- 1- $\frac{3}{16}$ " plate, 4" x 4"
- 2- $\frac{3}{16}$ " plate, 2" x 4"
- 1- Pipe, 1- $\frac{1}{4}$ " x 1" Long
- 6013 x $\frac{1}{8}$ " welding rod

Instructions:

1. Make sure you have on hand the appropriate safety gear and to wear it at all times.
2. From the plate strips provided, measure and shear 1 piece at 4" long and 2 pieces at 2" long.
3. Use the O/A torch to cut the 4" plate into 2 pieces using the measurements indicated in the diagram.
4. Perform the welds indicated on the diagram.
5. All welds will be graded on correctness, uniformity, smoothness, and placement.
6. General Consideration is given to layout, neatness, and overall workmanship.

O/A Cuts	(10)	
3-Pass Fillet	(20)	
Single Pass Fillet	(10)	
Single Pass Lap (2 Beads)	(10)	
Single Pass Butt	(15)	
Pipe to Plate	(20)	
General Consideration	(15)	

TOTAL SCORE = (100)

--