

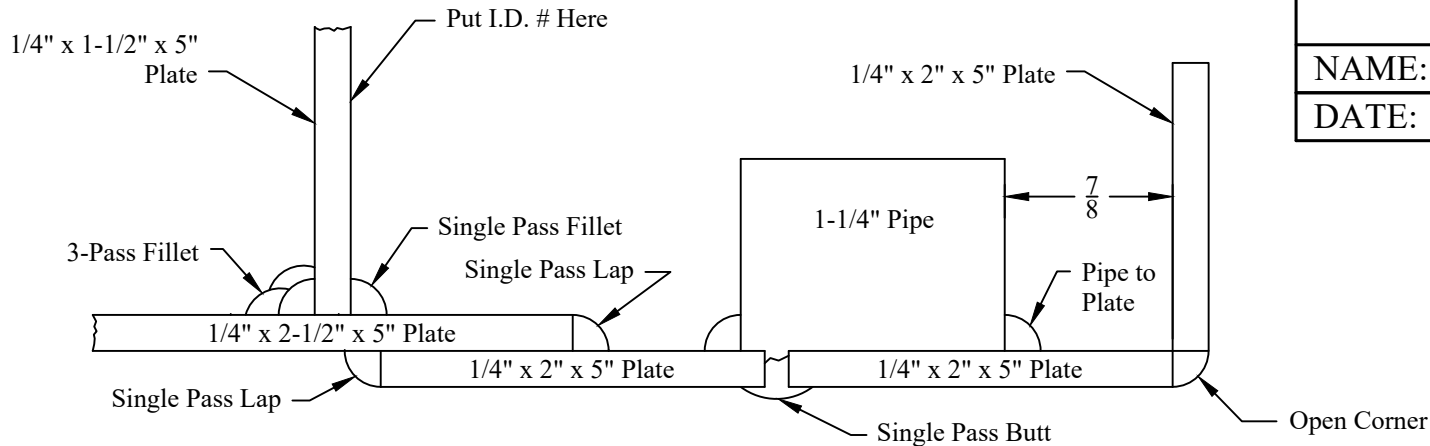
HILMAR HIGH SCHOOL

ARC Welding Assignment

NAME:

DATE:

I.D #:



Materials:

- 1- 1/4" plate, 4" x 5"
- 3- 1/4" plate, 2" x 5"
- 1- Pipe, 1-1/4" x 1" Long

ARC Welder

7018 Electrodes (1/8" diameter)

Instructions:

1. Make sure you have on hand the appropriate safety gear and to wear it at all times.
2. Use the O/A torch to cut the 4"x5" plate into 2 pieces using the measurements indicated in the diagram.
3. Perform the welds indicated on the diagram.
4. All welds will be graded on correctness, uniformity, smoothness, and placement.
5. General Consideration is given to layout, neatness, and overall workmanship.

O/A Cuts	(15)	
3-Pass Fillet	(25)	
Single Pass Fillet	(15)	
Single Pass Lap (2 Beads)	(20)	
Single Pass Butt	(15)	
Pipe to Plate	(25)	
Open Corner	(15)	
General Consideration	(20)	
TOTAL SCORE = (150)		