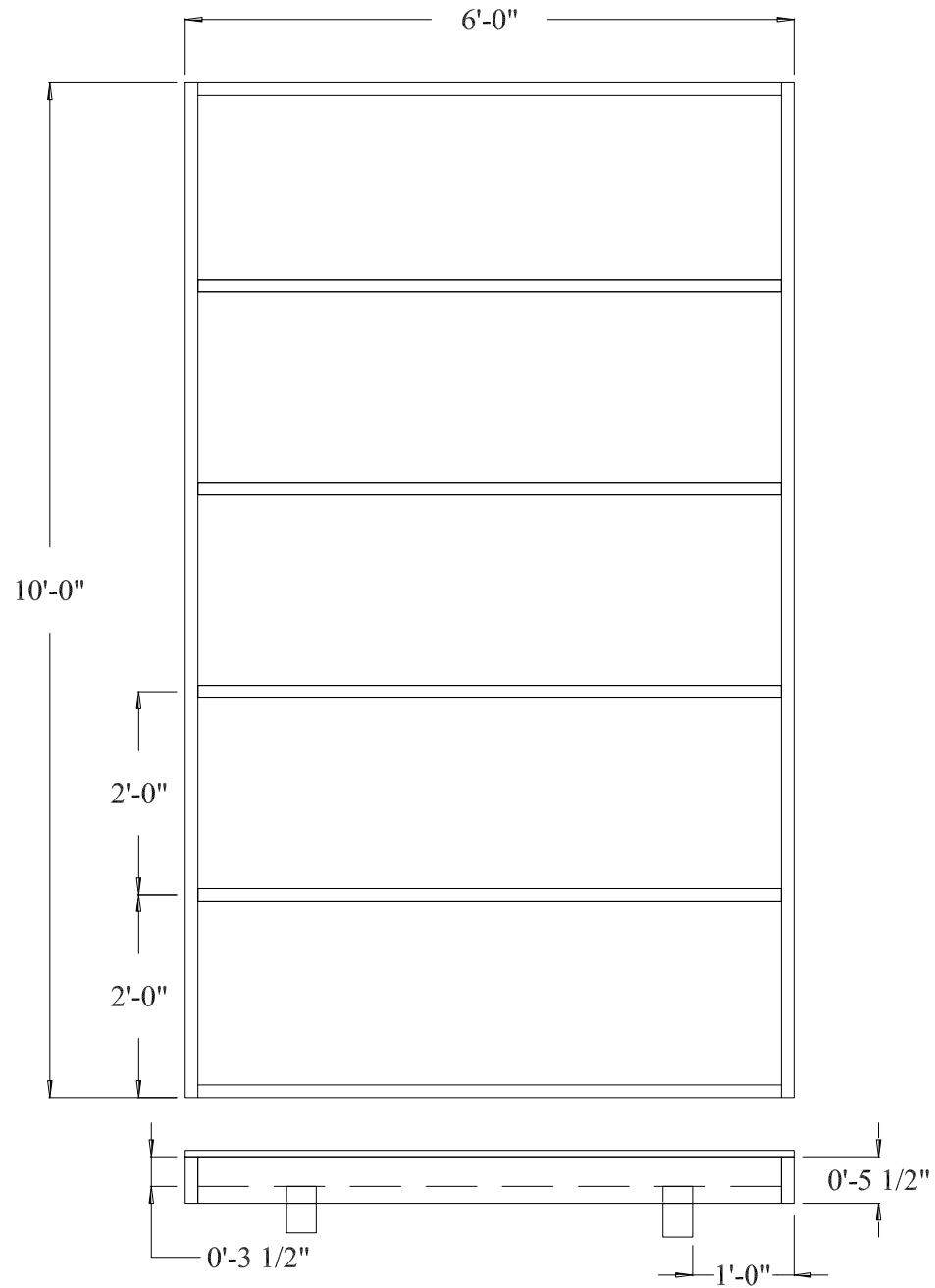
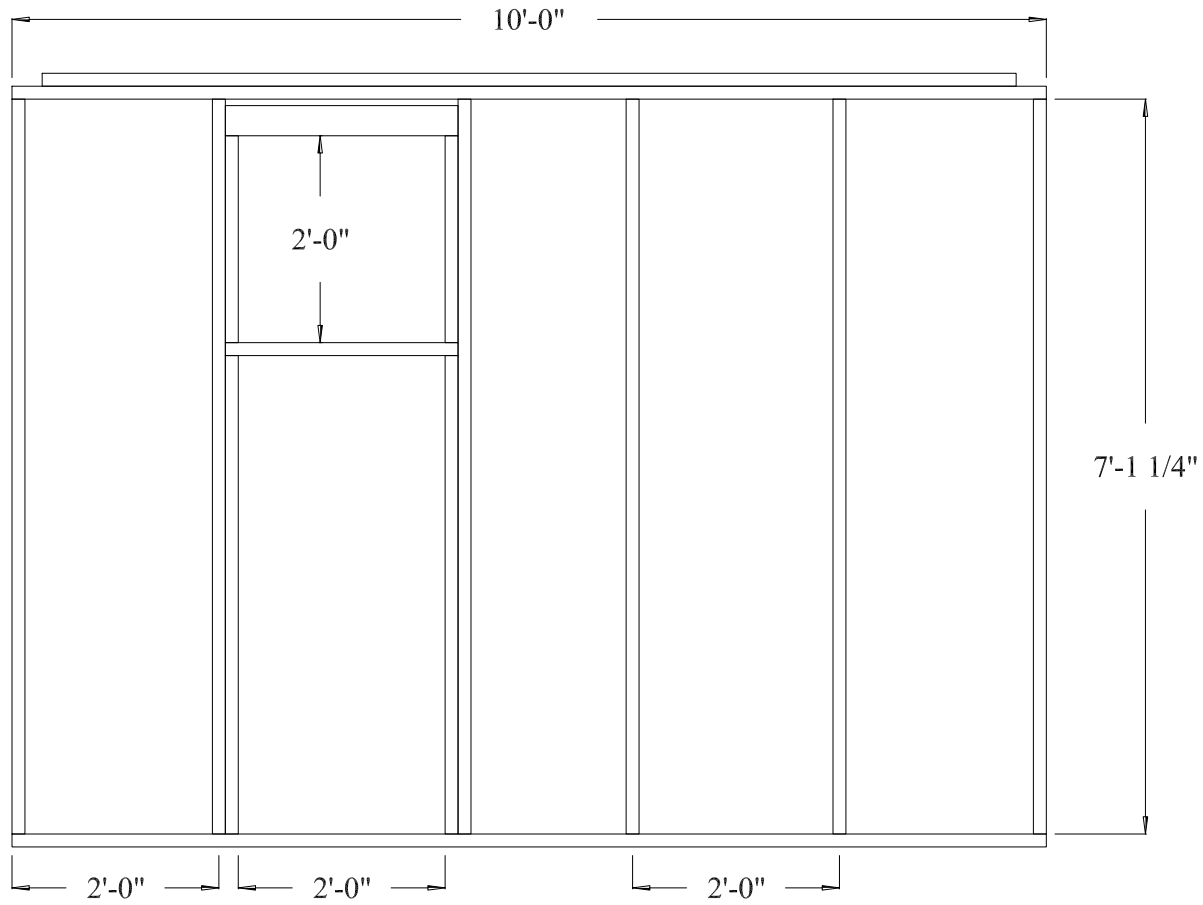


# Floor Framing



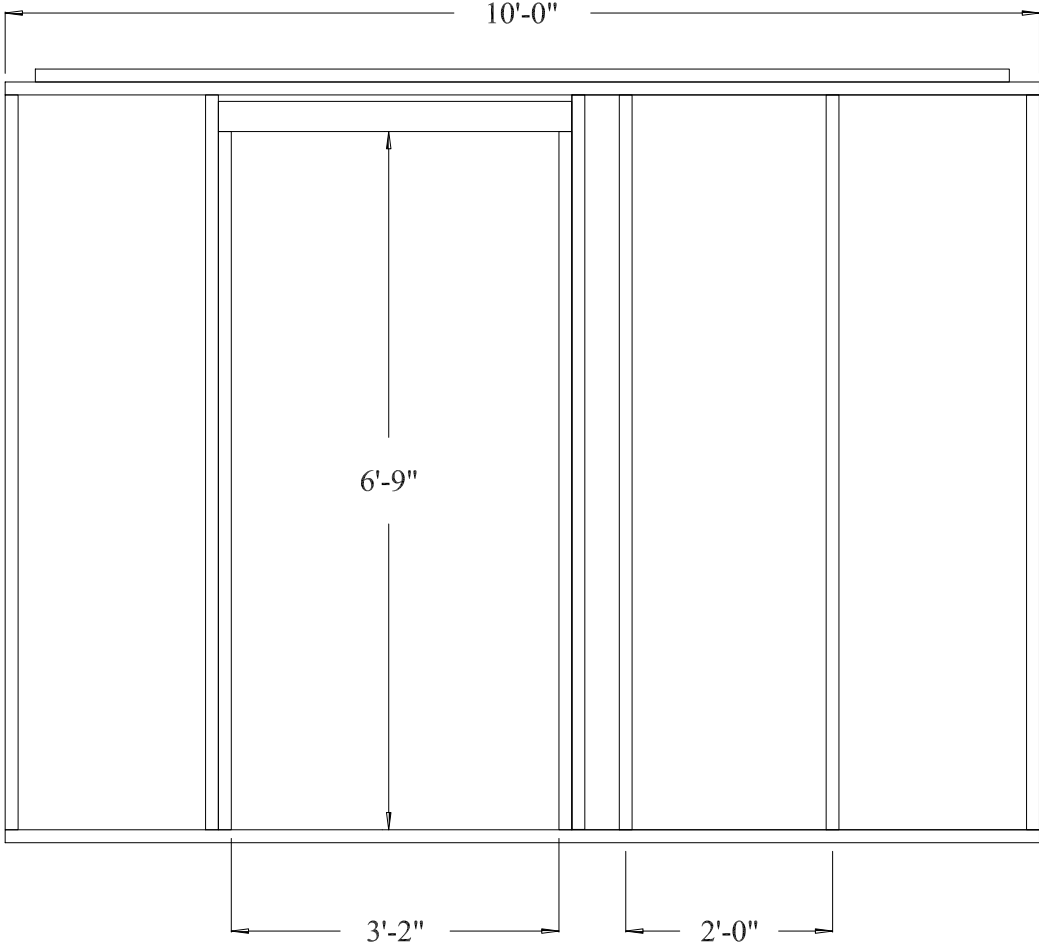
6 x 10 Storage Shed  
Scale: 1/2"=1'  
Drawn By: M. Spiess  
Date: 06/15/14

# Side Wall Framing

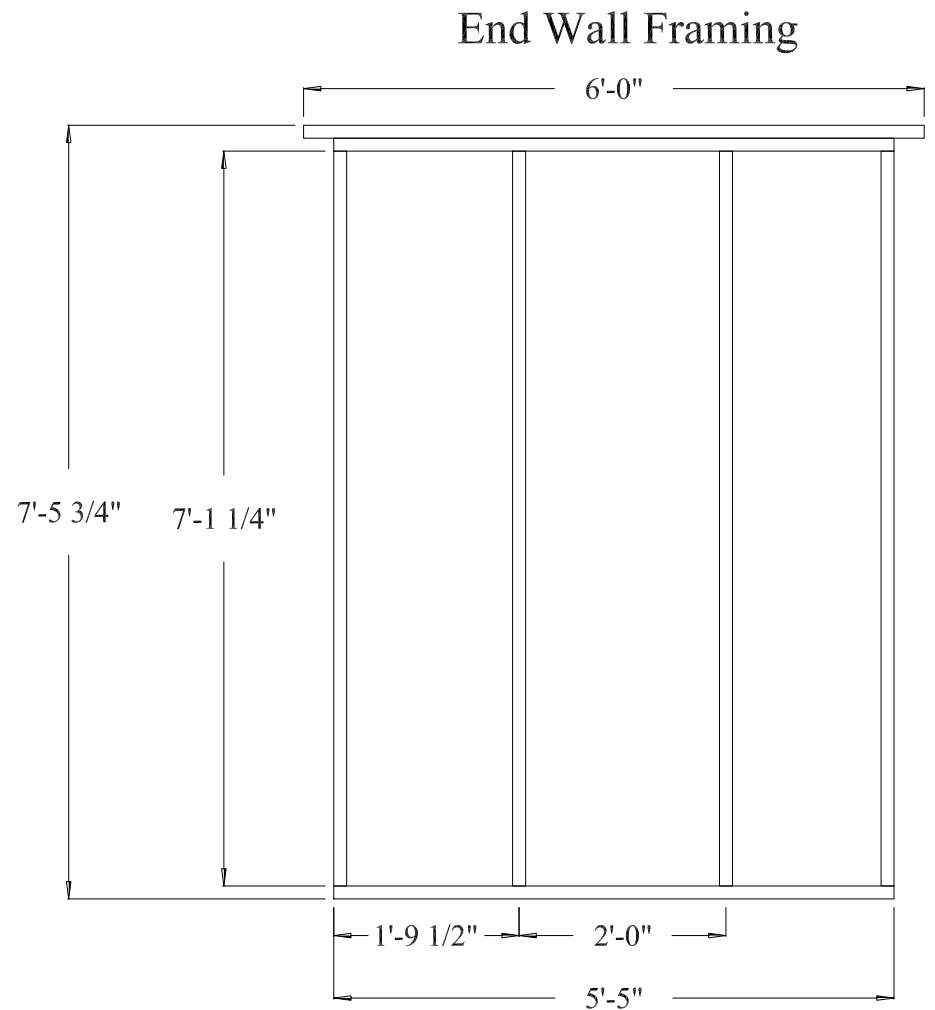
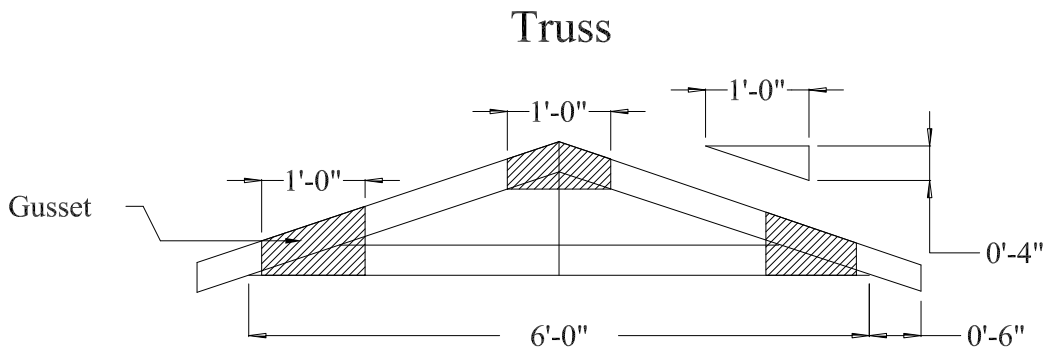


6 x 10 Storage Shed  
Scale: 1/2"=1'  
Drawn By: M. Spiess  
Date: 06/15/14

# Side Wall Framing



6 x 10 Storage Shed  
Scale: 1/2"=1'  
Drawn By: M. Spiess  
Date: 06/15/14



6 x 10 Storage Shed  
 Scale: 1/2"=1'  
 Drawn By: M. Spiess  
 Date: 06/15/14