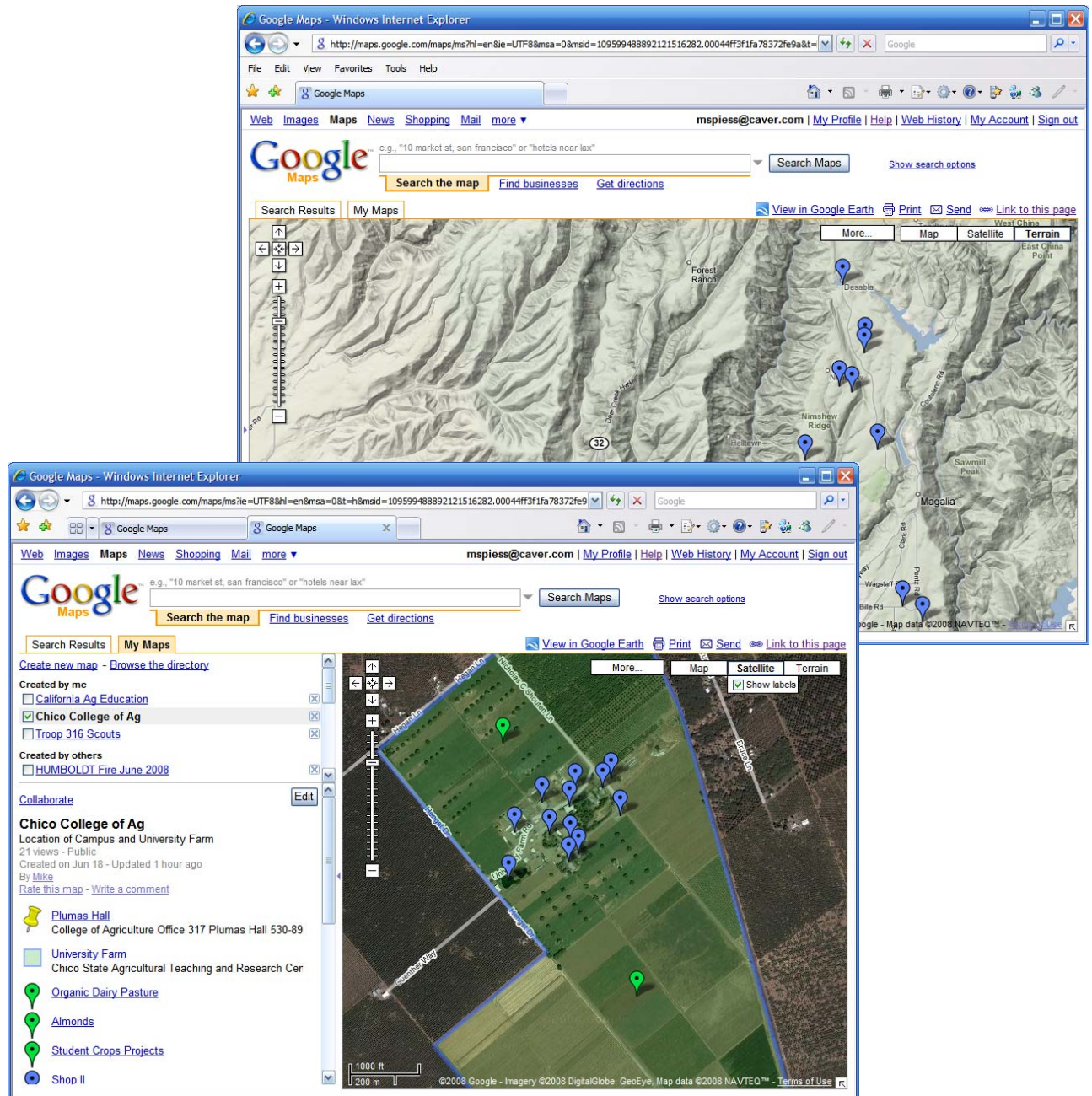


# Using Google Maps in the Classroom and for Program Management

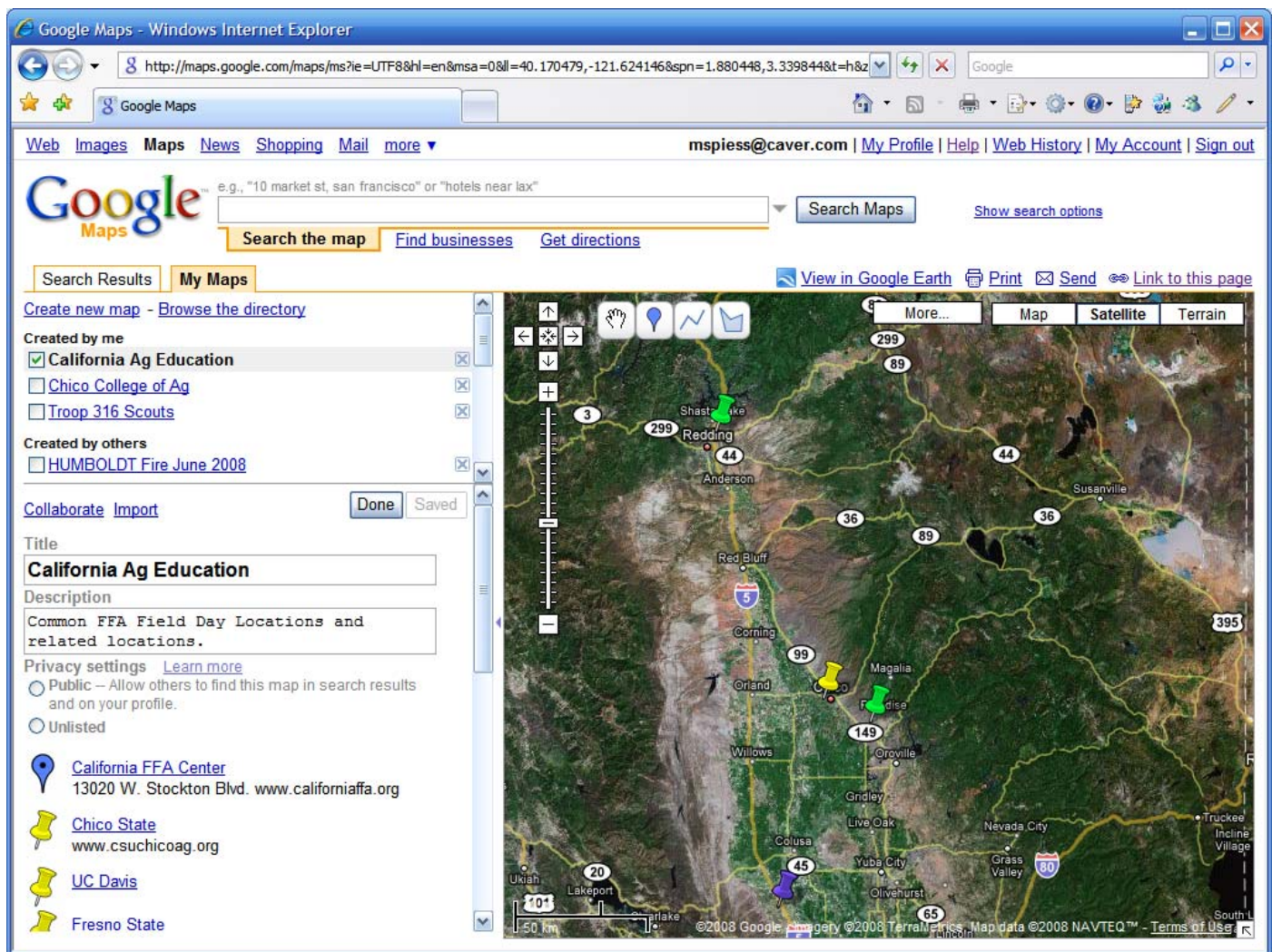


## Using Google Maps in the Classroom and for Program Management

Google provides a free service as part of their Google Map product that allows you to create both public and private maps using their mapping products as a base map. Custom maps have all the nice features of Google Maps such as driving directions. Users can choose between map, satellite, or terrain views. Satellite and terrain view are nice for science related lessons.

### Possible Uses

- Field trip and activity locations
- SAE project locations
- Map of the school farm
- Meeting locations (create the map and send the link)
- Use to demonstrate GIS (Ag Standard 4.4). Note that maps can be used in Google Earth as well
- Create maps of common crops in your region



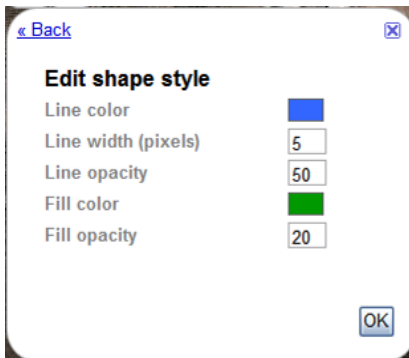


## The Steps

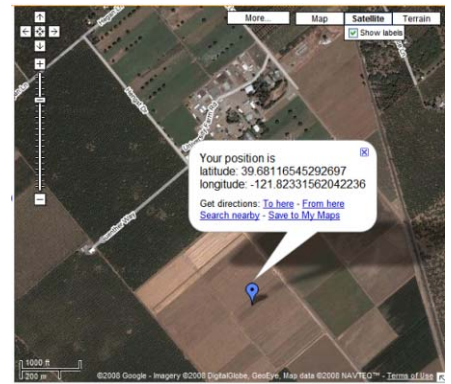
1. Create a login for Google (this is required for the map creator only)
2. Open Google Maps at: <http://maps.google.com/maps>
3. Click on the “My Maps” tab
4. Click on “Create a new map”
5. Zoom in to the area you want to work with
6. Add points, lines, or polygons (areas) using the tools provided



Point Markers (icons)



Polygon (shapes) Settings



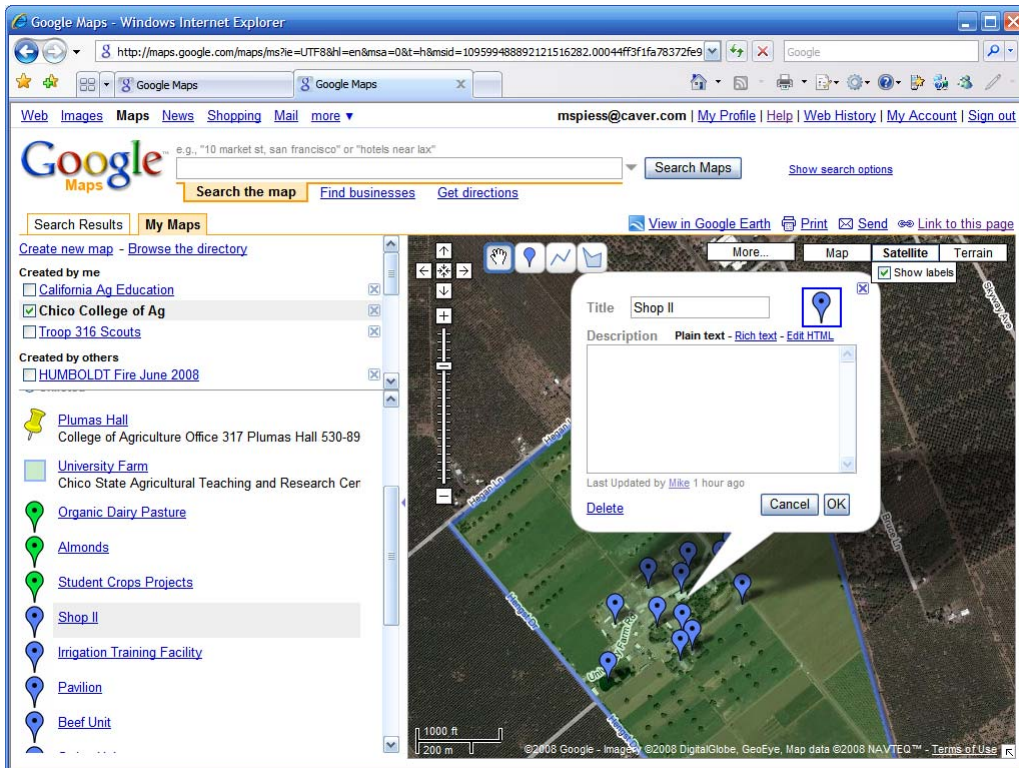
Finding Position with Position Finder

## Hints:

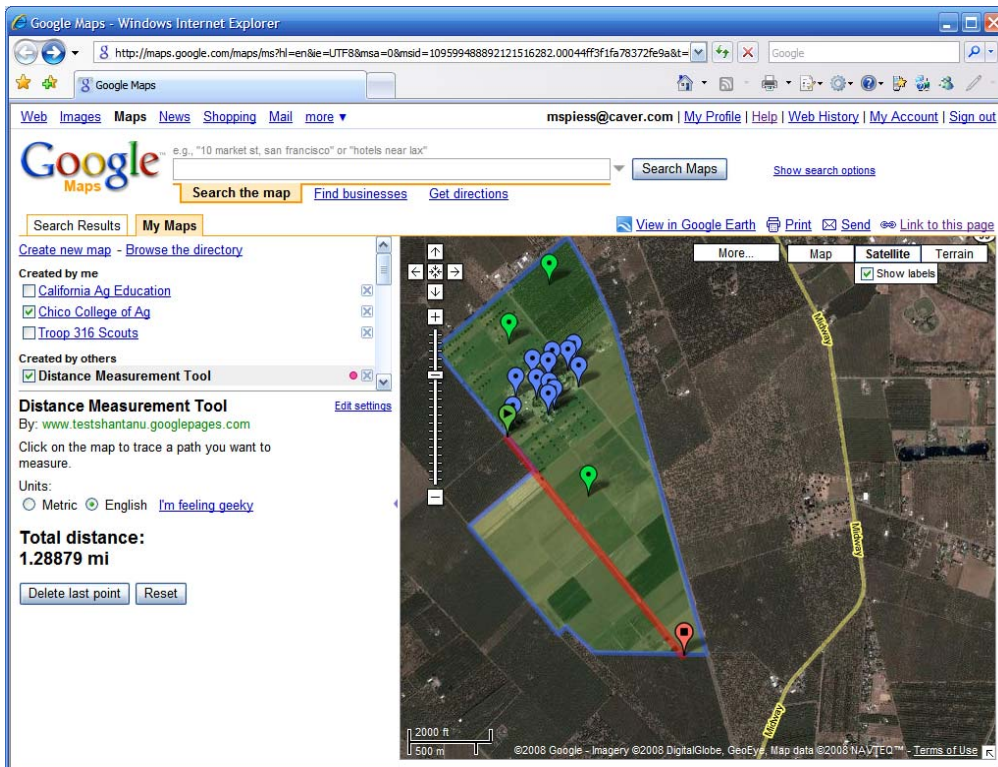
- Use the search box to locate a specific address. Enter the address in the format:  
1000 Forest Glen, Paradise, CA , 95969  
Google Maps will then find the address and mark it
- For point locations use different markers for different types of locations
- For shapes use the Fill Opacity to make a lighter or darker shape. Again, color can be used to note different types of locations such as different crops.
- Create private maps to keep the map confidential.
- Maps can be embedded in the school web site or emailed.
- Any location on the map can be used to get driving directions by the map user.
- Use the “Help” link in the upper right corner of the browser and then choose “My Maps” for specific help on creating maps.
- Save your local location as the default so Google Maps will open with a local map (instead of the world).

## Other Tools:

- Other tools are available to measure distances, show contours, and measure areas.
- These are generally third party tools that you can add to your map list.
- These tools can be useful for classroom activities such as learning about GPS and land measurement.



Entering Point Information (Data displays in the list on the left.)



Distance Measuring Tool (red line)

Michael Spiess  
 California State University, Chico  
[mspliess@csuchico.edu](mailto:mspliess@csuchico.edu) <http://www.csuchicoag.org/aged>