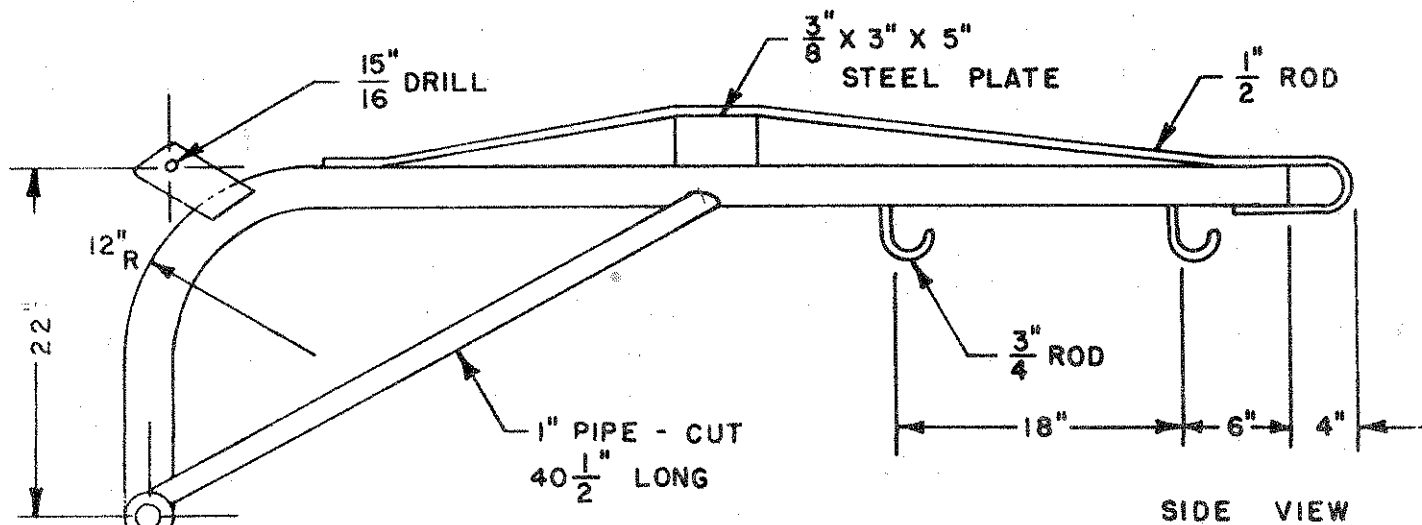
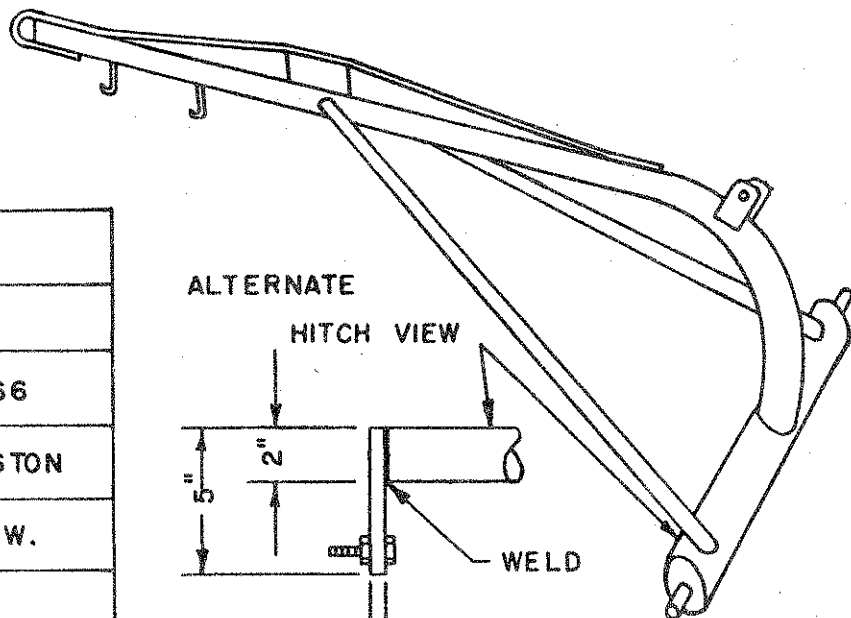


TOP VIEW



SIDE VIEW



TRACTOR HOIST
SCALE - 1" = 1'-0"
DATE - 17 FEBRUARY 1966
USED - COURTESY - C. WESTON
DRAWN & TRACED BY - B.W.
PLAN NUMBER - 5

### Bill of Material

- 1 - 2" x 92" double strength pipe
- 1 - 2" x 27" double strength pipe
- 2 - 1" x 40 1/2" pipe for braces
- 2 - 7/8" x 2 1/4" round rod for hitch
- 2 - 3/8" x 2" x 2" flat metal for closing in hitch
- 2 - 3/8" x 2" x 4" flat metal for top hitch
- 1 - 3/8" x 3" x 5" plate for top truss
- 1 - 1/2" x 72" round rod for top truss
- 2 - 3/4" x 7" round rod for bottom hooks

#### Alternate hitch

- 2 - 1/2" x 2" x 5" flat metal
- 2 - 7/8" implement hitch pins

### Construction Procedure

1. The construction of this project requires a pipe bender of some type,
2. Measure end of pipe back 18 3/4" and this will be the center of bending point.
3. Cut top hitch plates and drill 15/16" hole.
4. Cut 1 inch pipe braces and grind to fit pipes.
5. The 7/8" hitch pins can be made in shop, but it might be better to purchase commercial hitch pins than attempt to make them.
6. Tack weld the pipe braces and top 3/8" x 3" x 5" plate in place and weld alternately as too much welding on one side of pipe will cause distortion.
7. Clean welds and grease from pipe and paint with a rust inhibiting paint. Complete by painting with an enamel paint.