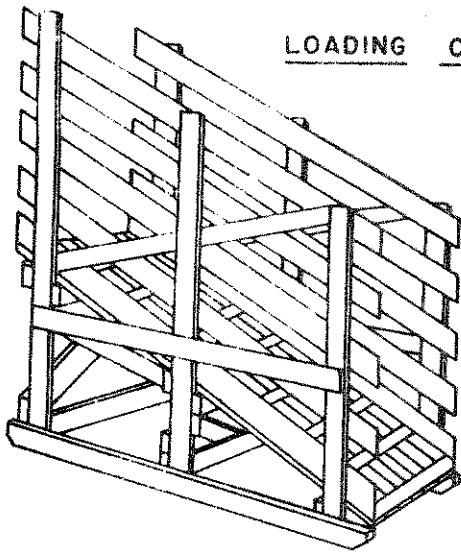


LOADING CHUTE

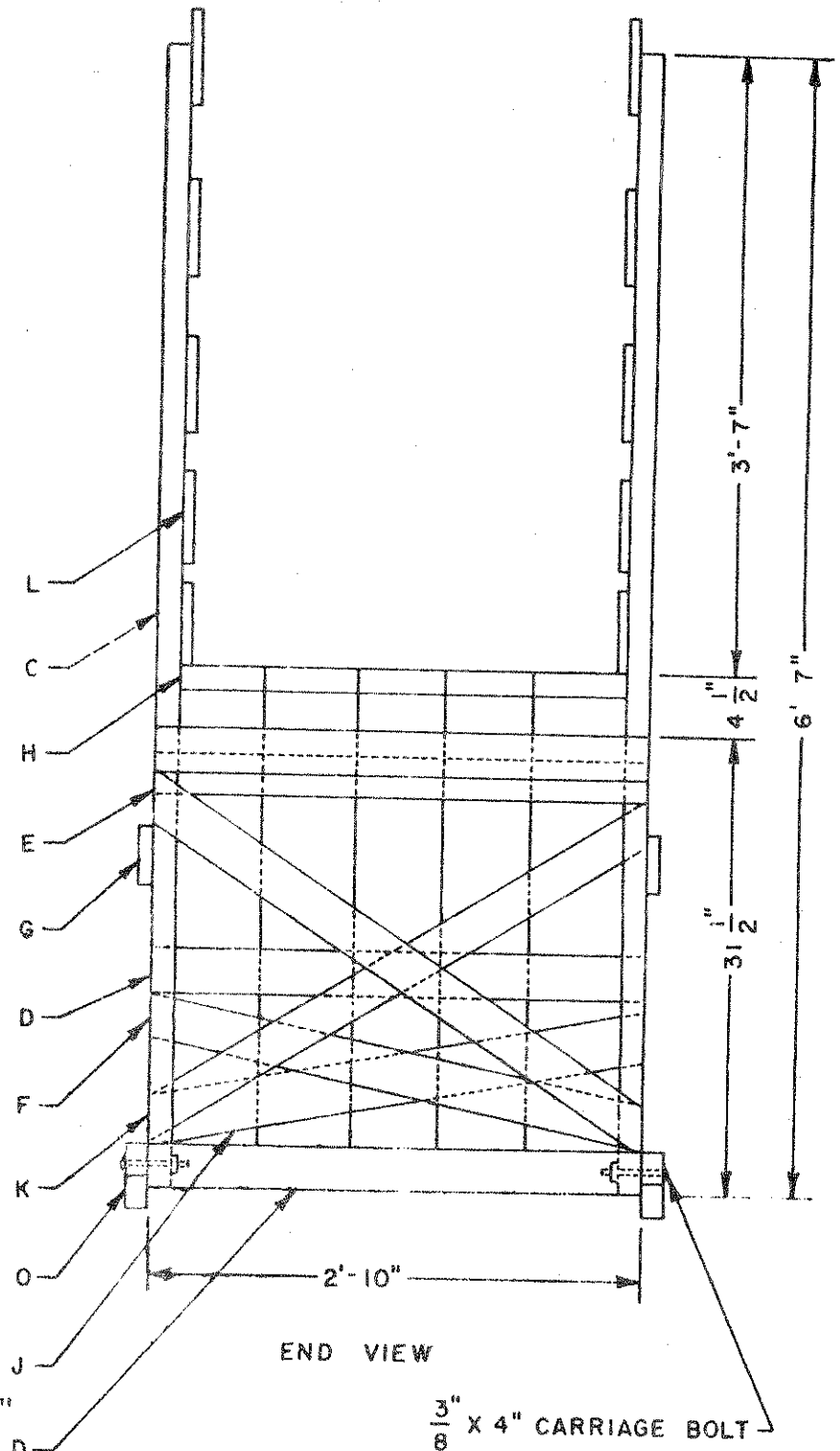


Bill of Material

- 4 - 2" x 4" x 8' - front braces, front legs and rear legs
- 6 - 2" x 4" x 12' - center legs, crosspieces, center braces and cleats
- 1 - 2" x 4" x 6' - 2 cleats
- 10 - 1" x 6" x 8' - sides
- 5 - 2" x 6" x 8' - floor
- 4 - 1" x 4" x 6' - side braces
- 2 - 2" x 6" x 8' - runners
- 4 lbs. 16d common nails
- 2 lbs. 6d common nails
- 6 - 3/8" x 4 1/2" carriage bolts

Procedure

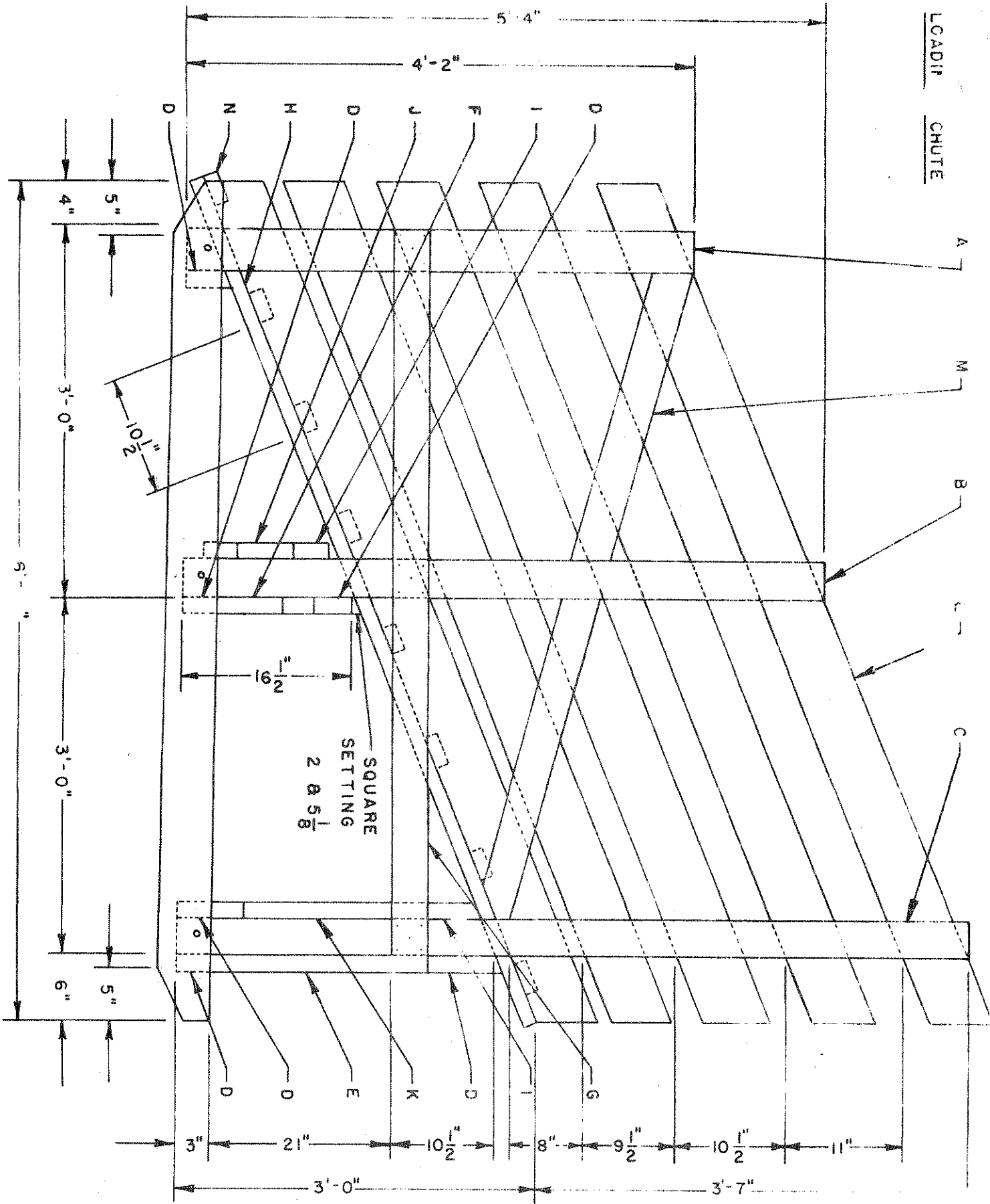
- A. Cut 2 - 2" x 4" x 4'2"
- B. Cut 2 - 2" x 4" x 5'4"
- C. Cut 2 - 2" x 4" x 6'7"
- D. Crosspieces, cut & nail 6 - 2" x 4" x 2'10"
- E. Front brace, 1 - 2" x 4" x approximately 3'6"
- F. Center brace, 1 - 2" x 4" x approximately 3'0"
- G. Carrying bar, 2 - 1" x 4" x 6'0" (tack in position)
- H. Floor, 5 - 2" x 6" x 7'6" (lay in)
- I. Crosspieces, 2 - 2" x 4" x 2'10" (find position, nail together)
- J. Center brace, 1 - 2" x 4" x approximately 3'0"
- K. Front brace, 1 - 2" x 4" x approximately 3'6"
- L. Side boards, 10 - 1" x 6" x approximately 8'0"
- M. Brace, 2 - 1" x 4" x 6'0" (fit in)
- N. Cleats 8 - 2" x 4" x 28 1/2"
- O. Runners 2 - 2" x 6" x 8'



END VIEW

3/8" X 4" CARRIAGE BOLT

LOADING CHUTE
SCALE - 1" = 1'-0"
DATE - 9 APRIL 1967
USED - COURTESY - C. WESTON
DRAWN & TRACED BY - B.W.
PLAN NUMBER - 402



LOADING CHUTE

SQUARE SETTING
2 Ø 5 1/8

A

M

B

L

C

D

N

H

D

J

F

I

D

D

D

E

K

D

I

G

4"

5"

3'-0"

10 1/2"

5'-0"

3'-0"

6"

5"

3"

2 1/2"

10 1/2"

8"

9 1/2"

10 1/2"

11"

3'-0"

3'-7"

5'-4"

4'-2"