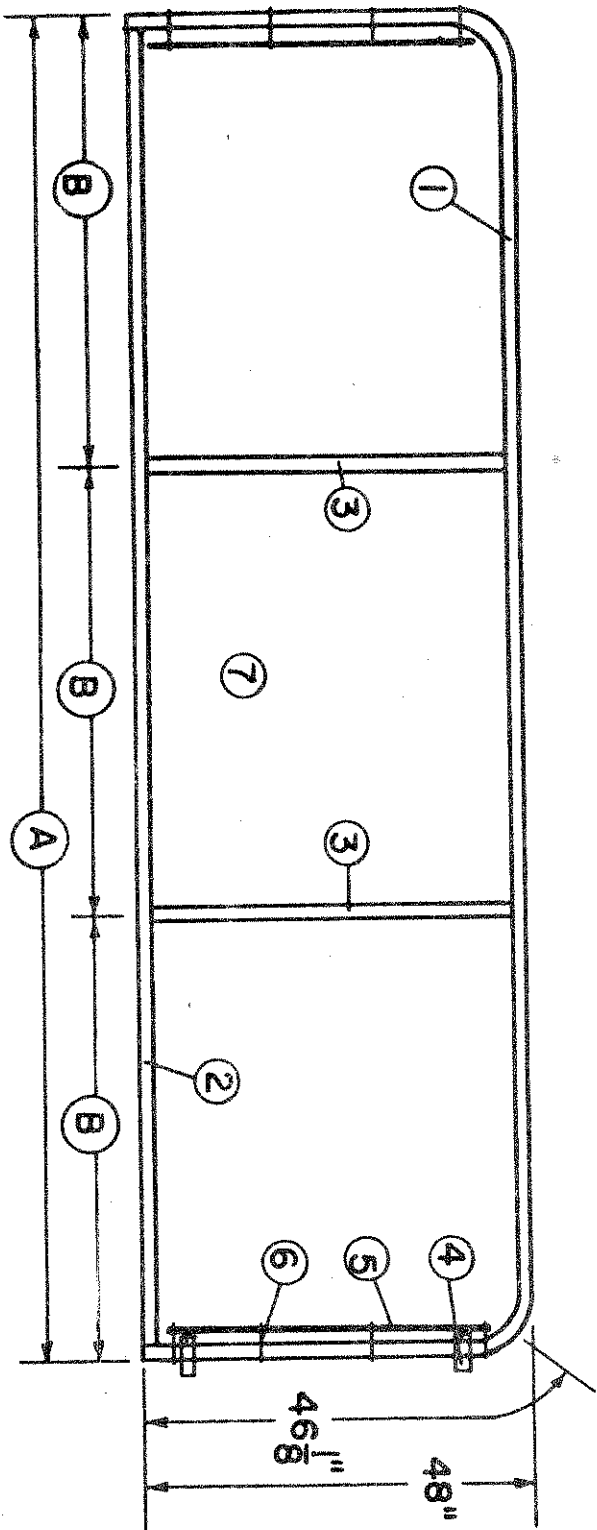


CURVED TOP PIPE GATE (8-16 ft.)



CURVED TOP, PIPE GATE - 1" Pipe

Plan designed for one shot pipe bender.

STEPS AND PROCEDURE

1. Cut and bend top rail (1" pipe)
2. Cut remaining material.
3. Flatten both ends of bottom rail, both ends of center pieces and assemble.
4. Metal condition or prime and paint if using other than aluminum paint.
5. Assemble wire.
6. Metal condition or prime and paint aluminum color.

CURVED TOP PIPE GATE
Date: 7 December 68
Drawn by: Dale Pontius Marion Kimmons
Plan No. 404

MATERIAL DETAILS

Part No. Description

Distance A	Gate Length	8 ft.	10 ft.	12 ft.	14 ft.	16 ft.
Distance B	Upright spacings	4'-0"	5'-0"	4'-0"	4'-8"	4'-0"
1.	Top Rail, 1" pipe	15'-4½"	17'-4½"	19'-4½"	21'-4½"	23'-4½"
2.	Bottom, 1" pipe	7'-9 3/4"	9'-9 3/4"	11'-9 3/4"	13'-9 3/4"	15'-9 3/4"
3.	Center piece 45½", 1" pipe	1 pc.	1 pc.	2 pcs.	2 pcs.	3 pcs.
4.	Hinge, 5/8" bolt on type to fit over 1 3/8" O.D. pipe.	2	2	2	2	3
5.	Stretch bar, 3/8" rod	2 - 47"	2 - 47"	2 - 47"	2 - 47"	2 - 47"
6.	Fence clips, No. 9 wire 10" long	8	8	8	8	8
7.	Chain Link Wire, 48" high Hand tight for measure- ment	7' - 2"	9' - 1"	11' - 1"	13' - 0"	15' - 0"