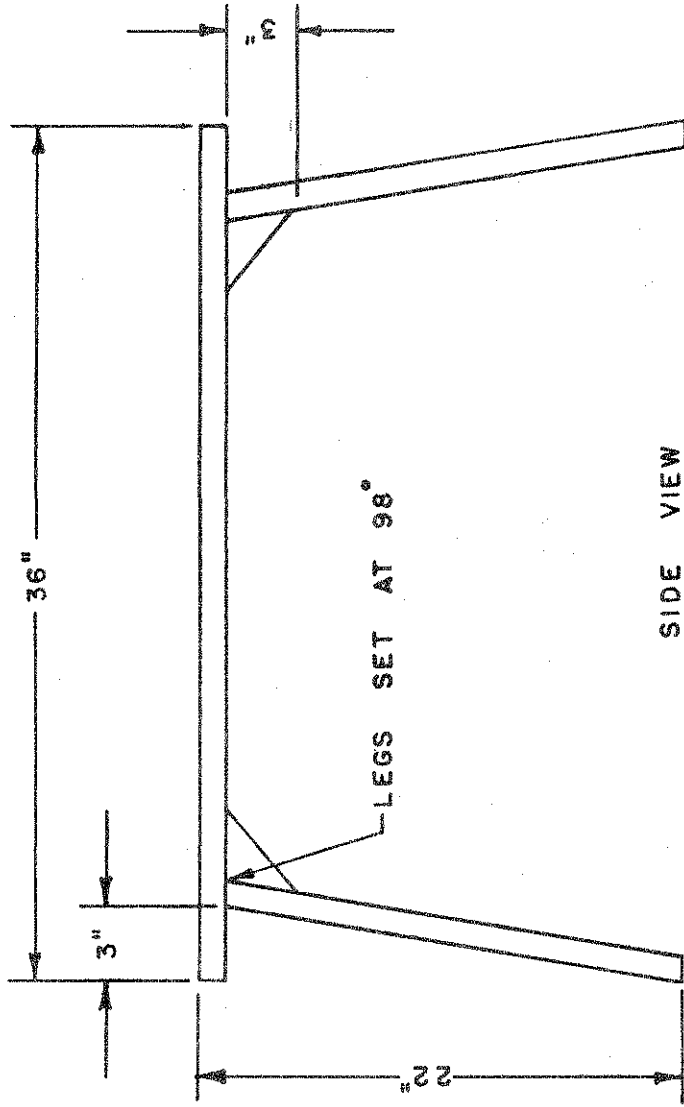
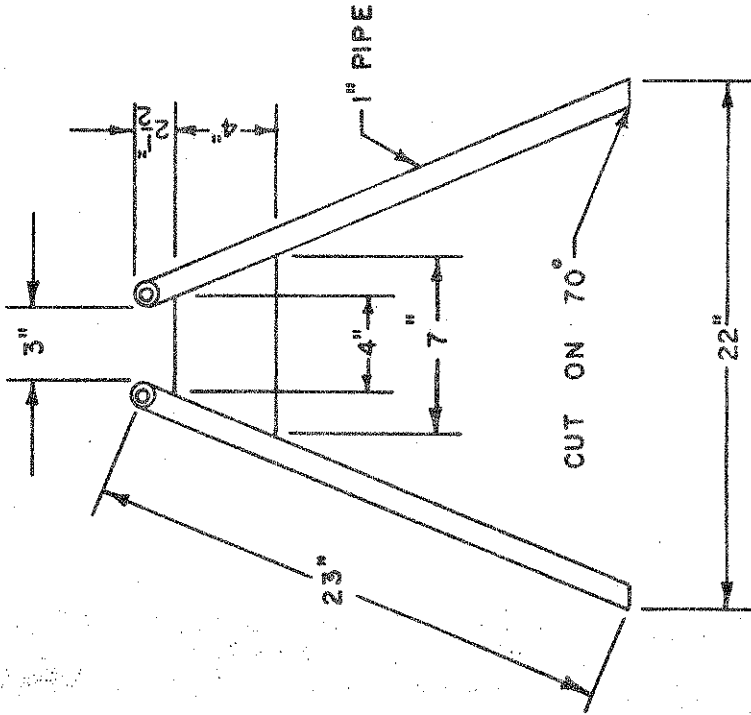


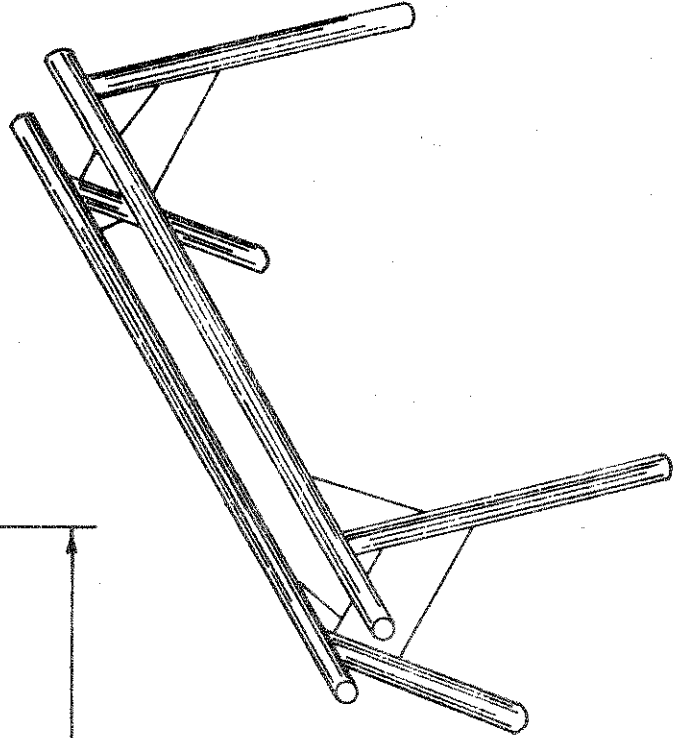
OPEN TOP PIPE SAWHORSE



SIDE VIEW



END VIEW



OPEN TOP PIPE SAWHORSE
SCALE - $\frac{1"}{8} = 1"$
DATE - 5 MARCH 1966
USED - COURTESY - C. WESTON
DRAWN & TRACED BY - B.W.
PLAN NUMBER - 102

Bill of Material

- 1 - 2" black pipe to desired length
- 4 - 1 1/4" x 22" black pipe for legs
- 2 - 1 1/4" x 9" black pipe for braces

Construction Procedure

1. When sawing the legs it would be easier to cut two lengths of pipe 44" long and then saw each length in the middle to form the angle cut for the bottom of two legs. Use square setting of 5" and 12", cutting on the 5" side of the square.
2. The legs at the tops are ground to fit the 2" pipe.
3. Use a spacer to locate the legs 20" apart when viewed from the end, place 2" pipe in place on legs, square legs and tack weld.
4. Complete welding job, clean welds and metal before painting with a rust inhibiting paint. Complete project by painting with enamel.