

Name _____

Lab # 6 -- Plumbing

Description: In this lab you will work with three common plumbing materials: galvanized pipe, copper pipe, and plastic pipe.

Materials:

- 7" - 3/4" Galvanized pipe
- 1 - 3/4" Galvanized 90° Ell
- 6" Copper Pipe
- 1 - 1/2" Copper 90° Ell
- 6" Plastic Pipe
- 1 - 3/4" PVC SS 90° Ell

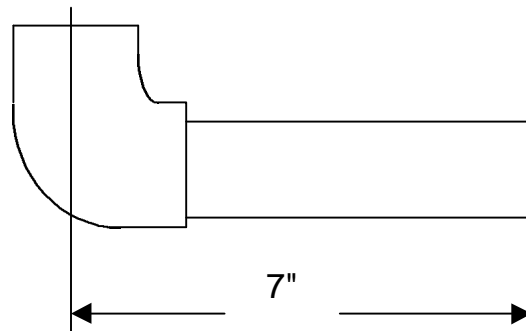
Tools:

- Steel pipe cutter
- Pipe Threader
- Hack Saw
- Solder
- Propane Torch
- Acid and Brush
- PVC Cement

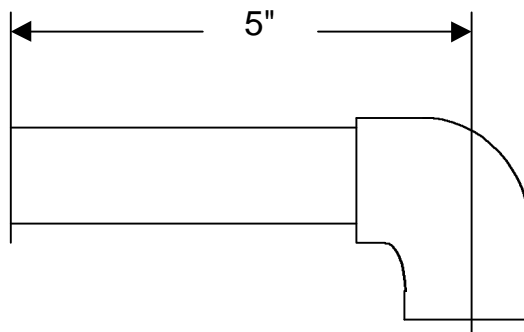
Directions:

Read the directions before beginning the lab.

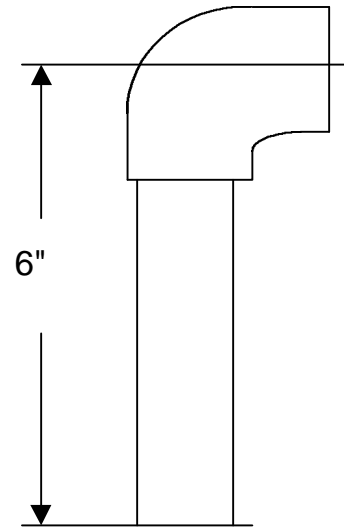
1. Determine the correct length of 3/4" galvanized pipe to fit the diagram. Measurement is from the end of the pipe to the CENTER of the fitting. Assemble the pipe and fitting. Cut a _____" Galvanized Pipe nipple. Thread one end with the power threader, ream, and cut to length. Thread the other end by hand and ream. Assemble with the provided fitting using pipe sealant.



2. Cut a piece of 1/2" copper pipe the correct length to fit the diagram below. Measurement is from the end of the pipe to the CENTER of the fitting. Assemble the pipe and fitting. Solder the joint.



3. Cut a piece of 3/4" PVC pipe the correct length to fit the diagram on the right. Glue the joint.



Grading:

Criteria	Possible	Score
Galvanized Nipple		
Length (+/- 1/16")	2	
Thread quality (machine thread)	2	
Thread quality (hand thread)	2	
Reaming	2	
Copper Fitting		
Length (+/- 1/16")	2	
Solder joint quality	2	
Cut square and deburred	2	
PVC		
Length (+/- 1/16")	2	
Glue joint quality	2	
Cut square and deburred	2	
TOTAL	20	