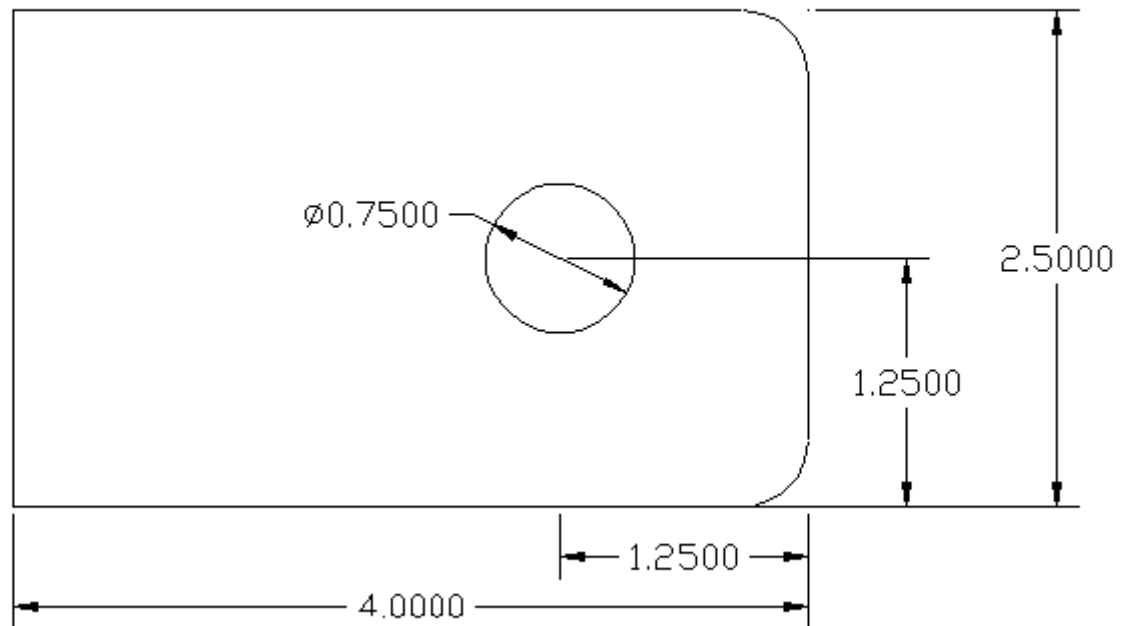


Cold Metal Project

Skills:

- Project layout.
- Use of the drill press.
- Use of the grinder.
- Use of a metal file.



Tools:

- Combination Square
- Scratch Awl
- Center punch
- Ball peen hammer
- Dividers
- 1/4" twist drill
- 3/4" twist drill
- Metal saw (hack saw, band saw, etc.)
- Grinder
- Bastard file

Materials:

5" 2 1/2" x 3/8" mild steel

Directions:

1. Using the square and the scratch awl layout cut lines 4" apart.
2. Layout the center of the hole and mark with the center punch.
3. Layout the center of the two chamfered corners and mark with the center punch.
4. Cut the project to length using a metal saw.
5. Using the dividers mark the corners with a 1/2" radius.
6. Drill a pilot hole using the 1/4" drill.
7. Drill the 3/4" hole.
8. Grind the corners to shape.
9. Dress the project with the file.

[Download PDF version of the project](#)