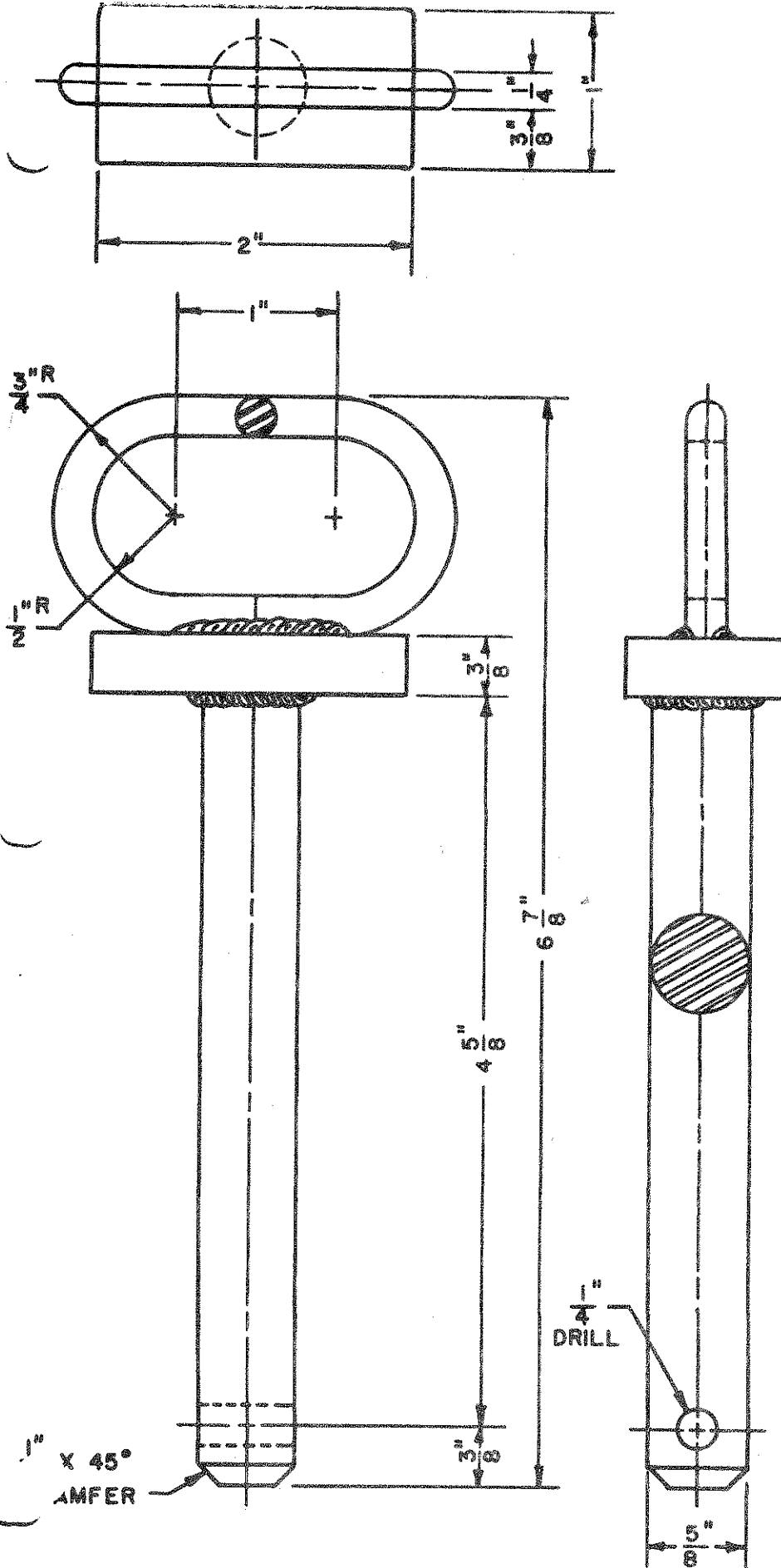


DRAWBAR PIN



Bill of Material:

- 1 pc mild steel 3/4" round 5" long
- 1 pc bar 3/8" x 1" x 2" long
- 1 pc rod 1/4" x 6" long

Construction Procedure:

1. Cut top of pin to length.
2. Cut pin to length.
3. Drill 1/4" hole in bottom of pin.
4. Cut and shape handle of pin.
5. Weld pieces together to make pin.
6. Grind off rough part of weld and end of pin.
7. Paint using metal paint.

Suggestions:

1. Bend handle cold using a vise and a 3/4" pipe as an aid for bending.
2. To get handle welded in center of pin, lay pin flat on welding table. Then place a piece of 3/8" flat metal under handle to act as a holding jig while welding.

Drawbar Pin
Scale: 12" = 1'-0"
Date: 6 July 1964
Drawn by: Dale Pontius
Mo. Agr. Ed. Plan No. 800