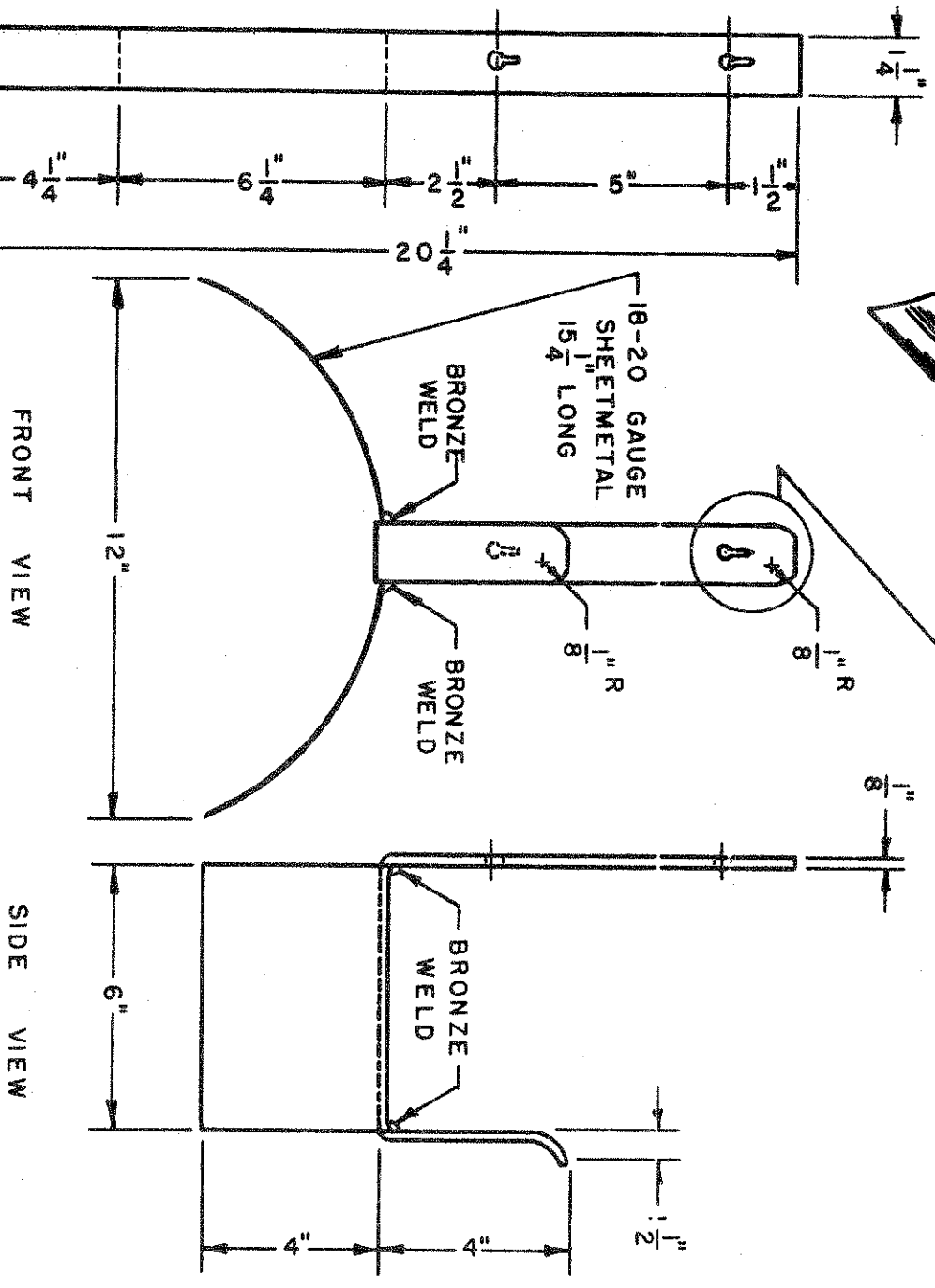
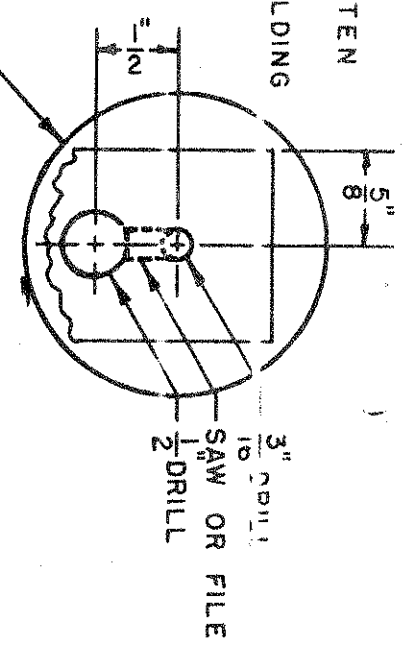
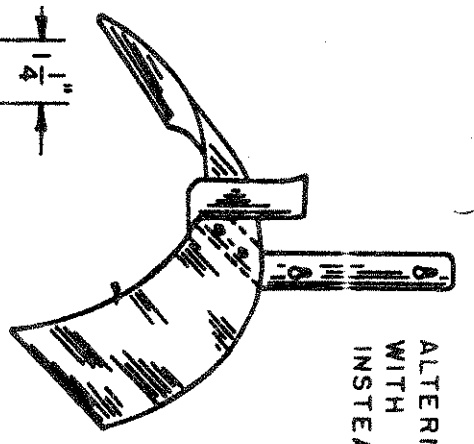


HOSE HANGER

ALTERNATE - FASTEN WITH 2 RIVETS INSTEAD OF WELDING



FRONT VIEW

SIDE VIEW

- Bill of Material:
- 1 - 1/8" x 1 1/4" x 20 1/4" flat metal.
 - 1 - 6" x 15 1/4" x 18-20 gauge sheet metal.

Construction Procedure:

1. Cut sheet metal to size and shape by rolling or shaping around some round object.
2. Cut 1/8" x 1 1/2" x 20 1/4" flat metal and round one end to 1/8" radius. Locate hanger holes and locate with center punch. Drill with 3/16" bit and 1/2" bit and cut out remaining metal with chisel, file or saw. Dress up hanger holes with file.
3. Bend flat metal as shown.
4. Bronze weld or rivet as indicated

HOSE HANGER
SCALE - $\frac{1}{4}$ " = 1'-0"
DATE - 7 JULY 1965
USED - COURTESY - C. WESTON
DRAWN & TRACED BY - B.W.
PLAN NUMBER - 700