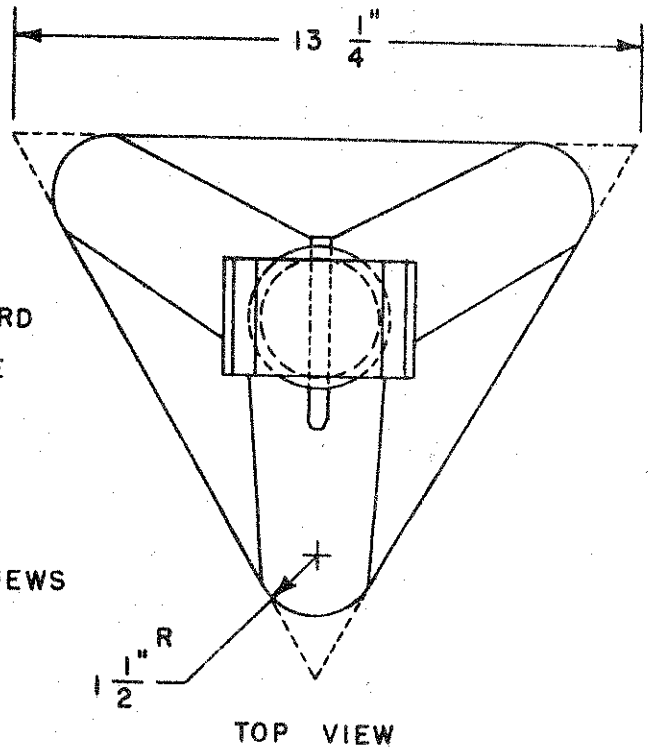
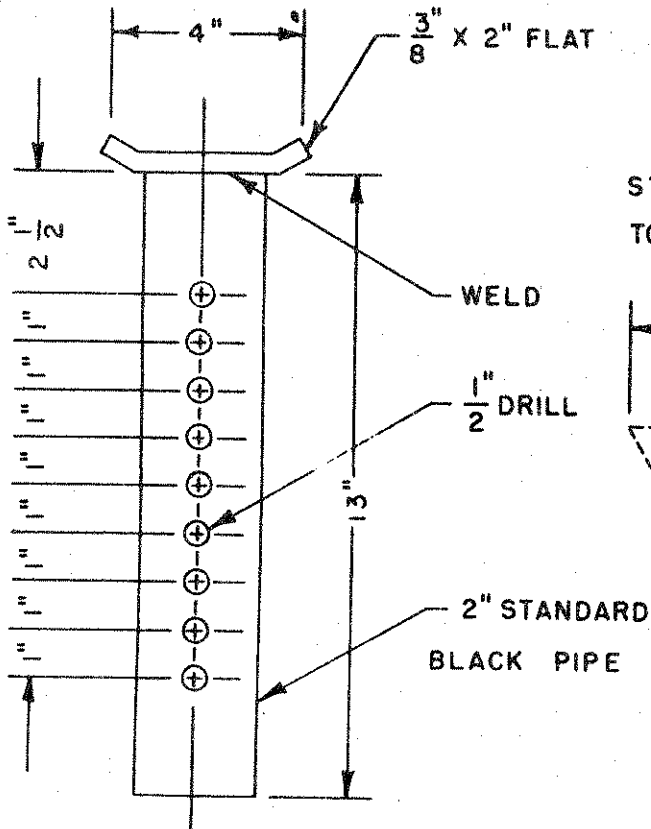
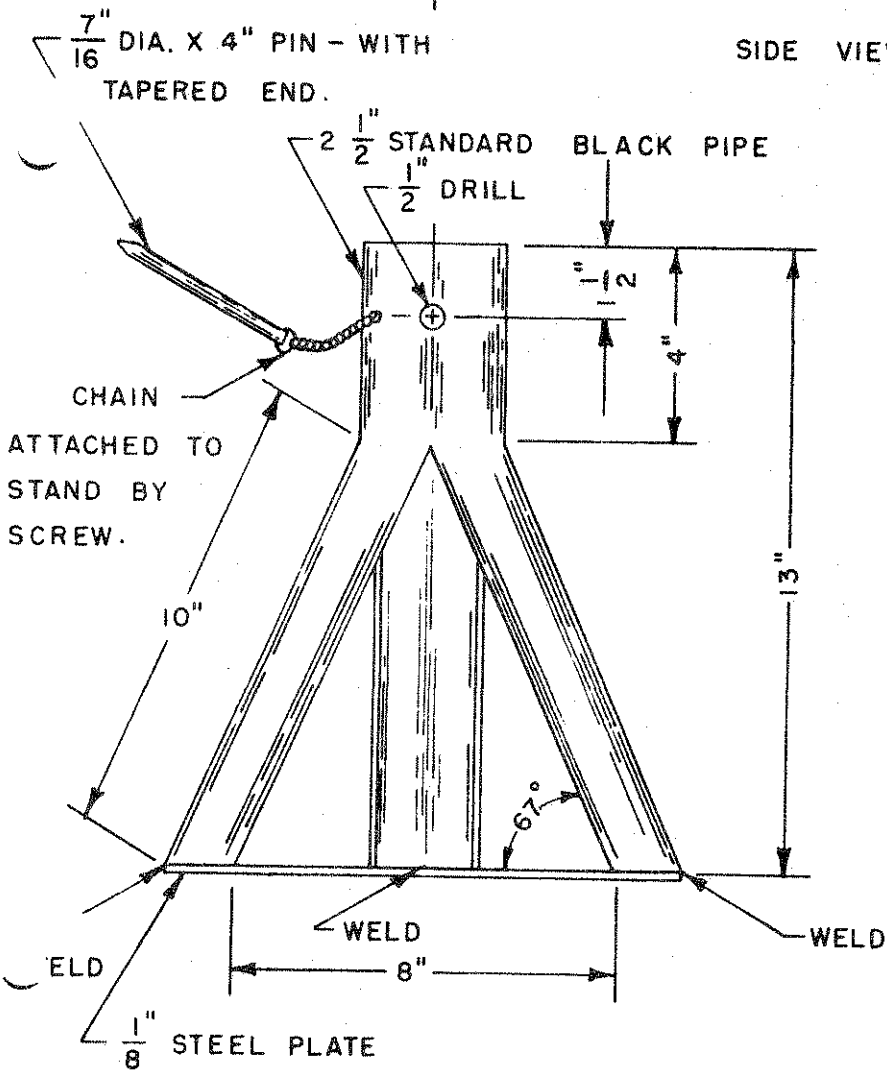


SHOP STAND

NOTE — THIS IS THE LENGTH OF STEEL PLATE PRIOR TO ROUNDING CORNERS TO FIT EDGES OF 2 1/2" PIPE.



SIDE VIEWS



SHOP STAND
SCALE - $\frac{1}{4}'' = 1''$
DATE - 10 FEBRUARY 1967
USED - COURTESY - C. WESTON
DRAWN & TRACED BY - B.W.
PLAN NUMBER - 106

### Bill of Material

- 1 - 2 1/2" x 14" Black pipe
- 1 - 2" x 13" Black pipe
- 1 - 3/8" x 2" x 4" Flat iron
- 1 - 1/8" x 13 1/4" x 13 1/4" Triangular flat plate
- 1 - 7/16" x 4" Round iron
- 1 - 6" length of small chain

### Construction Procedure

1. Mark and cut all pieces to length.
2. Wrap the 2 1/2" piece of pipe with a thin piece of cardboard or paper and mark the circumference of pipe on the paper. Fold the piece of paper into three equal lengths, then wrap paper back around pipe and mark the pipe into three equal sections, marking at each fold of the paper.
3. Use a short piece of angle iron to serve as a guide for cutting torch tip to cut out legs of stand.
4. Heat pipe at upper end of cut to bend out each leg of stand.
5. Use grinder to smooth out each leg of stand after cutting.
6. Mark out and cut 1/8" flat plate to dimension shown and weld to legs of stand.
7. Drill the 1/2" holes in the 2" pipe by securing pipe in vise or V notch cut in a scrap piece of lumber.
8. Bend 3/8" x 2" x 4" flat iron and weld to end of 2" pipe, be sure flat plate is welded at right angles to holes drilled in pipe.
9. Cut 7/16" x 4" pin and taper end and drill 3/32" hole in end for securing chain to pin. A hog ring is ideal for securing chain to pin.
10. Drill and tap a small hole to secure chain to body of pipe stand.
11. Prime stand with a rust inhibiting paint.
12. After primer coat of paint has dried, paint with a suitable metal enamel paint.